

NOW YOU CAN ADD POWERFUL DATA LOGGING  
CAPABILITY TO VIRTUALLY ANY  
ANALOG INSTRUMENT, AND DO IT INEXPENSIVELY  
WITH THE...

# NOMAD

---

DATA LOGGER



**interscan corporation**

The Nomad is a self-contained data logger that connects to your measuring instrument, and samples its output at a rate adjustable from once per second to once every 10 hours.

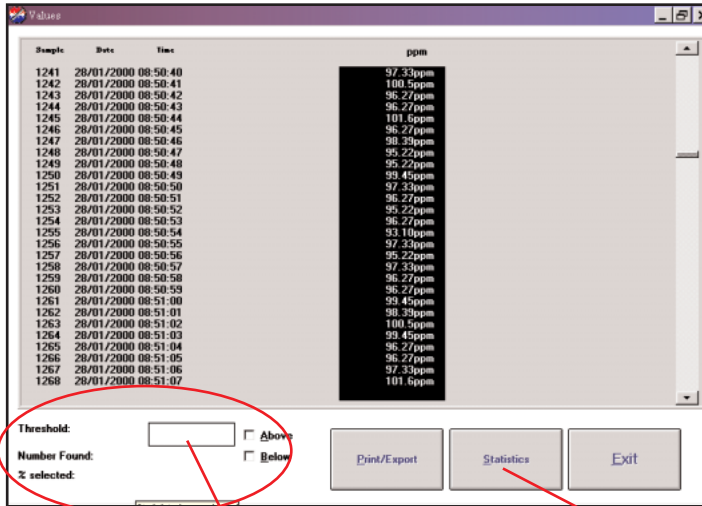
When your measurement session is completed, connect the Nomad to your computer, and let our user-friendly Windows® software do the rest.

Check out these screen shots.

Visualize your measurement session with an auto-scaling time history graph.



Look at every single data point.



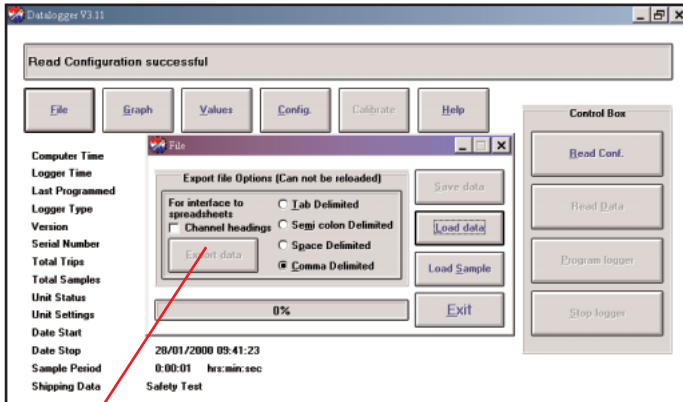
Target a threshold value, and determine the number of samples above and below this point.

Calculates the following for all samples

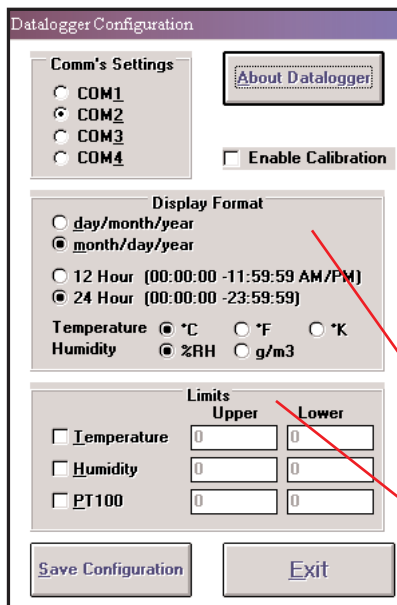
- Minimum
- Maximum
- Mean

For threshold studies

- Samples above limit
- Samples below limit
- Time above limit
- Time below limit
- Samples outside limits
- Time outside limits



Export your data to spreadsheet programs for further analysis.



Set display options and limits.

## Specifications

Sampling rate	Adjustable from 1 per sec to 1 per 10 hr in one second intervals
Storage capacity	16,336 readings
Packaging	The logger is a cylindrical tube
Materials of construction	Type 304 stainless steel
Dimensions	6 $\frac{1}{4}$ in. x $\frac{3}{4}$ in. dia. (159 x 19 mm)
Weight	150g (5.3 oz)
Power	One 3.6 V lithium cell
Battery life	> 5 years
Working/storage temperature range	-22°F to 158°F (-30°C to 70°C)
Models available for these inputs:	0-100 mV 0-2.5 V 4-20 mA

If you've been searching for the ideal little data logger...

You've found it!!



***interscan corporation***

*P.O. Box 2496  
Chatsworth, CA 91313-2496  
1 800 458-6153  
(USA & Canada)  
(818) 882-2331  
FAX (818) 341-0642  
[www.gasdetection.com](http://www.gasdetection.com)*